


PERSONAL NAVIGATOR

TUESDAY, APRIL 30, 2013

Sunrise: 6:31 a.m. Sunset: 7:40 p.m.
 Evening Attire: Pirate or Cruise Casual
 All Ashore: 8:30 a.m.
 All Aboard: 5:00 p.m.
 Gangway: Deck 1, Midship. Deck 1, Aft 
 Tuesday: Cloudy High: 75°F/24°C
 Wednesday: Cloudy High: 72°F/22°C

DISNEY'S CASTAWAY CAY



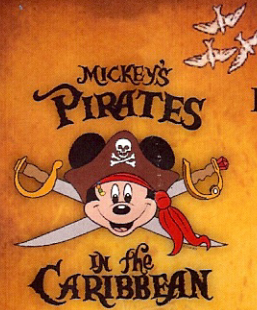
Disney 

OZ

THE GREAT AND POWERFUL

WALT DISNEY THEATRE
 Decks 3 & 4 Forward
 5:15 P.M. & 8:00 P.M.

 Assistance available at the Deck 3 entrance 30 minutes prior to show time.



7:45 - 8:05 p.m.
Deck Stage, Deck 11, Midship marks the spot
 It's a Pirate Celebration, me hearties! Come experience all the pirate fun alongside Captain Mickey Mouse and his famous Pirate Crew. (Weather Permitting)



Buccaneer Blast Fireworks
 What's a pirate party without some fireworks to remind the other ships who be ruling the oceans blue?
10:30 p.m.
Decks 11 and 12, Midship mark the spot
 Fireworks will be on display Starboard side - seen best from Deck 11, center pool area, and on Deck 12.

Disney's Castaway Cay

Reserved exclusively for Guests on Disney Cruise Line Bahamian and Caribbean cruise vacations, Castaway Cay is Disney's private port-of-call paradise. On this island, enjoy tropical leisure activities, such as snorkeling, boating, swimming and sunbathing.

Friendly Reminders

- Serenity Bay is reserved for Guests 18 and older.
- Your Key To The World Card will need to be used for all transactions on Disney's Castaway Cay except for the Post Office.
- A limited number of all-terrain wheelchairs are available across from Scuttle's Cove.
- For your convenience, beach towels are available as you leave the ship; please return them at the gangway at the end of your day.
- Due to our commitment to the environment, we ask that seashells, coral and other natural treasures be left undisturbed at Disney's Castaway Cay for all to enjoy.

Did you know?

AquaDuck water coaster evolved from the idea of having a "lazy river" experience on the perimeter of the main "sundeck."



GAME SHOW

Calling all Pirates, we be! If ye have an adventurous spirit or pirate savvy, come spin the "Wheel of Destiny," fer a treasure trove of fun be ripe for the takin' in this action packed pirate game show.

6:30 & 9:45 p.m.
D Lounge, Deck 4, Midship

Don't Miss:

- run Disney: Castaway Cay 5K (12+)**
Evolution, Deck 4, Aft - 8:15 a.m.
 Runners meet in Evolution, Deck 4, Aft, at 8:15 a.m. We will depart the ship at 8:30 a.m. and make our way to the Bike Rentals where the run will begin.
- Crab Races**
Island Gazebo 1, - 11:45 a.m.
Island Gazebo 2, - 12:45 p.m.
 Watch some local sea creatures make a break for the finish line.
- Pirate Trivia**
District Lounge, Deck 4, Aft - 4:00 p.m.
D Lounge, Deck 4, Midship - 9:15 p.m.
 Test your nautical knowledge with your Cruise Staff in this fun Pirate Trivia.
- Adult Krazy Karaoke**
Evolution, Deck 4, Aft - 11:00 p.m.
 Take to the stage, grab a microphone and sing your favorite song with your Club Host, Franky, and DJ Marius.



Visit Shutters for all your photographic needs, from Digital cameras, batteries, binoculars and accessories. All photos taken during this cruise will be available for viewing on our photo kiosks at Shutters Digital, as well as in your photo folder at Shutters, Deck 4, Midship.

DINNER MENU
 Animator's Palate: Pirate's Menu
 Enchanted Garden: Pirate's Menu
 Royal Palace: Pirate's Menu

DRINK OF THE DAY
 Bahama Mama (Alcoholic)
 Coco Bali (Non Alcoholic)

IMPORTANT NUMBERS
 Fire/Security 7-3001
 Medical EMERGENCY 7-3000
 Health Center 7-1923

FAMILY ACTIVITY HIGHLIGHTS



run **Disney**: **CASTAWAY CAY 5K (12+)**
Evolution, Deck 4, Aft - 8:15 a.m.
 Runners meet in Evolution, Deck 4, Aft, at 8:15 a.m.
 We will depart the ship at 8:30 a.m. and make our way to the Bike Rentals where the run will begin.

ISLAND POWER WALK

Meet at the Post Office, Castaway Cay - 9:30 a.m.
 Join your Cruise Staff for a brisk walk around the island. Meet outside, by the Post Office. Meet time is 9:30 a.m. Walk leaves promptly at 9:45 a.m.

BASKETBALL FREE THROW

In Da Shade Games, Castaway Cay - 12:00 p.m.
 Join your Cruise Staff in this fun tournament and see how many you can sink in 30 seconds!

FAMILY WHALE DIG

Monstro Point, Castaway Cay - 1:00 p.m.
 Our island paleontologist leads us in the excavation of a giant whale skeleton and other fossilized treasures! Make no bones about it, this is an adventure every beachcomber is sure to dig!

PIRATE TRIVIA

District Lounge, Deck 4, Aft - 4:00 p.m.
D Lounge, Deck 4, Midship - 9:15 p.m.
 Test your nautical knowledge with your Cruise Staff in this fun Pirate Trivia.

DISNEY VACATION CLUB® GROUP PRESENTATION

Evolution, Deck 4, Aft - 4:30 p.m.
 Want to learn more about taking magical vacations year after year? Stop by our interactive group presentation to find out more information from a Disney Vacation Club representative.



A PIRATE'S LIFE FOR ME
D Lounge, Deck 4, Midship - 6:30 p.m. & 9:45 p.m.
 Calling all Pirates, we be! If ye have an adventurous spirit or pirate savvy, come spin the "Wheel of Destiny" for a treasure trove of fun be ripe for the takin' in this action packed pirate game show.



ADULT ACTIVITY HIGHLIGHTS



SENSES SPA FITNESS CLASSES & SEMINARS
Body Sculpt Boot Camp (Nom. Fee) - Goofy's Sports Deck - 7:30 a.m.
Wake Up and Stretch - Senses Spa & Salon - 8:15 a.m.
Secrets To A Flatter Stomach - Senses Spa & Salon - 9:00 a.m.
Yoga on the Beach - Serenity Bay - 10:30 a.m.
Good Feet Seminar: Improving Posture - Senses Spa & Salon - 3:30 p.m.
Acupuncture for Pain Relief - Senses Spa & Salon - 4:30 p.m.
Ab Attack - Senses Spa & Salon - 5:00 p.m.

TASTING CLASSES

Beer Tasting - 687 Pub - 4:00 p.m. *Whiskey Tasting - Cove Café - 9:00 p.m.*
Cognac Tasting - Meridian - 9:00 p.m.
 Please make reservations for tastings at Guest Services for a nominal fee.
 Tasting Seminars are only for Guests 21 and Older.

BASKETBALL FREE THROW

In Da Shade Game Pavilion, - 1:00 p.m.



XBOX® KINECT™ CHALLENGE

687 Pub, Deck 4, Aft - 4:30 p.m.

MIXER

Currents, Deck 13, Forward - 10:00 p.m.

ART OF THE THEME SHOW TOUR

Meet at Meridian, Deck 12, Aft - 2:30 p.m.
 Join us on a guided ship tour and discover the key ingredients that make the Disney Dream cruise ship one-of-a-kind.

MAKING OF THE DREAM

Evolution, Deck 4, Aft - 3:00 p.m.
 Explore the origins of Disney Cruise Line and the latest and greatest innovations conjured especially for the Disney Dream, in this fascinating and entertaining behind-the-scenes program.



ESPN DREAM TEAM DRAFT DAY - BASEBALL
687 Pub, Deck 4, Aft - 5:00 p.m.
 Join the "Commissioner" and engage in this interactive fantasy baseball draft unlike anything you've ever seen! Can YOU draft the greatest baseball team of All-Time?

DOUBLE UP JACKPOT BINGO

**D Lounge,
 Deck 4, Midship
 Card Sales - 4:00 p.m.
 Game Starts - 4:15 p.m.**



Don't miss our four CASH prize games and your chance to win some Pirate treasure! Great Disney Cruise Line raffle prizes are also up for grabs plus your chance to win the Jackpot money early! All electronic chances are doubled today!

YOUTH ACTIVITY HIGHLIGHTS

DINE & PLAY

A convenience for families dining at 8:15 p.m., our Youth Activities Counselors will be available at 9:15 p.m. at the entrance of Royal Palace, Enchanted Garden and Animator's Palate dining rooms to bring registered children to join the fun in the Youth Activity areas.



Deck 5 Midship (7-1440) 5:00 p.m. - 10:45 p.m.

ONCE UPON A TIME

5:00 p.m.

Join Beverly the Bookmaker for a magical, musical story time featuring a Disney Princess!

SO YOU WANT TO BE A PIRATE?

6:15 p.m. & 8:30 p.m.

Have you learned about life on the high seas? Do you have what it takes to be a pirate? Join Captain Hook and his friends to find out!



Deck 5 Midship (7-1445)

4:00 p.m. - 1:00 a.m.

A PIRATE'S LIFE FOR ME

6:30 p.m.

Yo ho, yo ho, a Pirates Life for Me! Aarrgh me mateys! Put your knowledge to the test!

GET THE HOOK

9:15 p.m.

A villainous villain has stolen Captain Hook's prized golden hook. Become a member of the Top Deck Detective Agency and help solve the clues to retrieve Hook's hook.



Deck 13 Midship (7-9743) 4:00 p.m. - 1:00 a.m.

ANYONE CAN COOK

4:30 p.m.

Anyone can cook as we work together to create some of our favorite treats.

MAGIC SHOW

9:00 p.m.

Put some magic and wonder in your Dream vacation. Say, "Abracadabra!" and fun is sure to appear!



Entrance on Deck 4 Forward (7-9417)

5:00 p.m. - 2:00 a.m.

PUMP IT UP

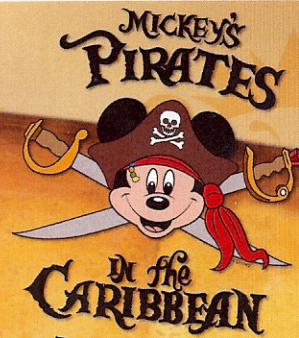
9:00 p.m.

Join us for an exclusive, teen only workout in the Senses Fitness Center! Pump It Up is offered daily from 9:00 p.m. - 10:30 p.m. Please check in at Vibe if you would like to attend!

GENDER WARS

11:00 p.m.

Join your Vibe counselors as we see who reigns supreme in this ultimate battle of the sexes!



7:45 - 8:05 p.m.

Pirate Games start at 7:30 p.m.
Deck Stage, Deck 11, Midship

It's a Pirate Celebration, me hearties!
Come experience all the pirate fun alongside Captain Mickey Mouse and his famous Pirate Crew.
(Weather Permitting)



Buccaneer Blast Fireworks

What's a pirate party without some fireworks to remind the other ships who be ruling the oceans blue?

10:30 p.m.

Decks 11 & 12, Midship
mark the spot

Fireworks will be on display Starboard side
Seen best from Deck 11, center pool area, and on Deck 12.

Club Pirate

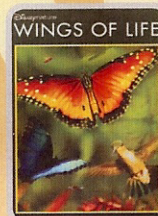
If ye be a fan of Pirates of the Caribbean, tis time to revel in the night at the hottest dance club in all the seven seas with Guest DJ Mike West.

(Immediately following Buccaneer Blast)

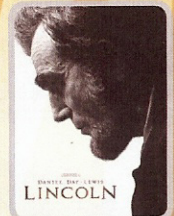


BUENA VISTA THEATRE

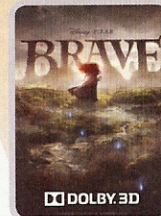
Today's Movies



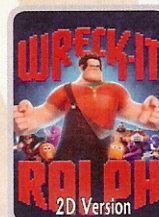
8:30 a.m.
Run Time: 1 hr 17 min
Rating: G



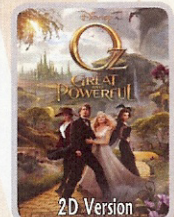
12:00 p.m.
Run Time: 2 hr 30 min
Rating: PG-13



3:00 p.m.
Run Time: 1 hr 41 min
Rating: PG



5:30 p.m. & 8:15 p.m.
Run Time: 1 hr 53 min
Rating: PG



11:00 p.m.
Run Time: 2 hr 07 min
Rating: PG

MORE TO ENJOY WHILE ONBOARD

ON DEMAND TV

Watch Disney movies, Hollywood features, ABC Shows, and even captioned content, plus much more "On Demand" for FREE in the comfort of your stateroom! Bookmark your movie and come back to watch it later. Press MENU on your stateroom television remote control and follow the prompts.

DISNEY VACATION CLUB® GROUP PREVIEW

Want to learn more about taking magical vacations year after year? Please see a Disney Vacation Club representative on Deck 4, Midship, or call 7-2805 from your stateroom phone for more information about our interactive group presentation.

PROTECT YOUR PURCHASES

Don't forget to activate your 60 day buyer's guarantee form for your purchases in Nassau. It's free and confidential. Pick one up at the Shopping Desk, Deck 4, Midship.



IONITHERMIE SLIMMING & DETOX TREATMENT:

Lose 1-8 inches in one session!
Ionithermie firms & tones, reduces appearance of cellulite & fluid retention and enhances blood circulation and body's metabolism.

One 50 minute session for \$155

Senses Spa, Deck 11, Forward, Ext 7-1465.

GUCCI JEWELRY AND WATCHES

Share in the magic and wonder of the Disney Dream with a fantastic accessory from Gucci. Discover rings, bracelets, necklaces, and earrings in many designs to match your style. Make a perfect his and hers match with watches for both men and women. This collection is highlighted by its 18k gold and sterling silver pieces. Experience the chic set we have onboard and take home a memory as good as gold.

WHITECAPS
Deck 3, Forward



PROFESSIONAL PORTRAITS

Lobby Atrium, Deck 3, Midship

Lifestyle & Ships Bow – Six Guests maximum
5:15 p.m. – 6:00 p.m., 7:15 p.m. – 8:30 p.m. & 9:30 p.m. – 10:15 p.m.

Grand Staircase – Groups accommodated
7:15 p.m. – 8:30 p.m.

**Please note that photos are available for viewing on our interactive photo kiosks approximately three hours after being taken and are only available for purchase during this cruise.*



Welcome to Disney's Island Paradise Castaway Cay. Today is the day to relax in an inner tube, snorkel in the Caribbean blue, get up-close and personal to real life stingrays or fly high in the sky on a parasail excursion during a breathtaking aerial adventure. Visit Marge's Barges or one of the rental locations and our friendly team will assist in making any last minute bookings.

PORT ADVENTURES MEETING TIMES AND LOCATIONS

As per ticket	Castaway Ray's Stingray Adventure	Gil's Fins and Boats
As per ticket	Glass Bottom Boat	Marge's Barges
As per ticket	Castaway Cay Bottom Fishing	Marge's Barges
As per ticket	Seahorse Catamaran Snorkel	Marge's Barges
As per ticket	Nature Walk and Kayaking	As per ticket
As per ticket	Parasailing	Marge's Barges
9:00 a.m. meet	Teen Wild Side	Vibe
As per ticket	Watercraft Ski Adventure	Boat Beach

Bicycles	9:30 a.m. - 4:00 p.m.	Near Cookies Too
Boats	9:30 a.m. - 4:00 p.m.	Boat Beach
Snorkeling Gear	9:30 a.m. - 3:30 p.m.	Gil's Fins and Boats / Flippers and Floats
Float	9:30 a.m. - 3:30 p.m.	Gil's Fins and Boats / Flippers and Floats
Getaway Package	9:30 a.m. - 3:30 p.m.	Gil's Fins and Boats / Flippers and Floats

Reservations can be made on the island at each rental location. Castaway Ray's walk up reservations can be made at Gil's Fins and Boats on Family Beach.

SHOPPING

MAROONED IN PARADISE

Welcome to Disney's Castaway Cay! She Sells Seashells And Everything Else and Buy The Seashore are your island memory destinations where you can find everything from apparel to plush to postcards to swimwear and, well, everything else! Get your run Disney Castaway Cay 5K tee exclusively at Buy The Seashore. Spend \$40.00 or more on the island and you may purchase a Castaway Cay drawstring backpack for \$14.95, while supplies last. Island purchases may be delivered to the ship for pickup after 6:00 p.m. in Whitecaps.

JOIN THE CREW OR WALK THE PLANK

Sign ye up to plunder and pillage with pirate swords and eye patches, and find your very own pirate costume. All supplies for tonight's adventure can be gathered at Mickey's Mainsail, Deck 3, Forward and Quacks, Deck 11, Midship.

BURIED TREASURE REVEALED

Discover a treasure chest full of exclusive Disney Cruise Line art. Discounted shipping available on two or more pieces of art. Partake in our silent auction, bidding closes at 9:00 p.m. tomorrow. Vista Gallery, Deck 4, Midship.

TREASURE OF KINGS, ALL THINGS THAT BLING

Satisfy your desire for treasure with our onboard Swarovski collection. Rings, necklaces, earrings, and even sparkling pens. Plus find some of your favorite Disney characters celebrated in crystal. All at great duty free prices. Whitecaps, Deck 3, Forward.

DOONEY & BOURKE CAPTURE THE SEA

The sweet temptations of the sea have inspired these quality bags once again. Our nautical and four ships collections will be a great accessory to add to your Disney Cruise Line memories. Whitecaps, Deck 3, Forward.

MEMORIES FROM ACROSS THE MAP

Come try on one of our quality designer fragrances from all over the world! Chanel, Gucci, Jimmy Choo, and many more for men and women. Whitecaps, Deck 3, Forward.

Due to port regulations, when the ship is docked, the stores will remain closed.

IMPORTANT INFORMATION

Security Notice

All Guests (including children) who wish to disembark the ship are required to present their Key to the World card at the gangway. A photo ID is also required for those Guests who are 18 years of age or older. Guests under the age of 18 are required to have a Parent, Guardian or other responsible adult sign an authorization form at the time it is given out if they wish to go ashore unaccompanied. Authorization forms are available at the gangways and Guest Services.

Please Note:

Please remember to use plenty of sunscreen and mosquito repellent when venturing ashore.

Cold and Flu Reminder

Please wash hands frequently and thoroughly, particularly before meals. Contact the Health Center by dialing 7-1923, should anyone in your party become ill.

Corridor Quiet Hours

As a courtesy to all our Guests, please recognize quiet hallway hours from 10:00 p.m. til 8:00 a.m.

Inclement Weather

For the safety of all Guests, outdoor events may be changed due to unforeseen weather conditions.

Environmental Message

With Disney's commitment to the Environment, please refrain from throwing anything over the Ship's side. Thank you!

No Reserved Seats Policy

As a courtesy to all our Guests, we kindly advise that the saving of seats is not permitted in the Walt Disney Theatre, and the saving of the sun loungers is not permitted on Deck 11, 12, and 13. Items left unattended will be returned to lost and found at Guest Services, Deck 3 Midship.

Smoking

For the comfort of our guests the following areas are designated as Smoking areas: - Promenade Deck (Deck 4), smoking is permitted Port Side, Aft only from 6:00 p.m. to 6:00 a.m.
- Currents - Deck 13, Forward, Port Side.
- Meridian Bar - Deck 12, Aft, Port Side, outside.
- Smoking is permitted on stateroom verandahs. Smoking is prohibited inside all guest staterooms. Guests found smoking in their staterooms will be charged a \$250 stateroom recovery fee.

Walt Disney Theatre

Theatrical performances may use artificial fog, strobe lights, pyrotechnics and other special effects. For the safety of our performers and the comfort of those around you, the use of any photography, video recording device or any electronic equipment is prohibited.

Verandah Safety

Please do not leave any combustible materials on your balcony when not present in your stateroom for safety reasons.

DD/NB/4D/232/04.28.2013/EMP/©DISNEY

Morning	8:30	8:45	9:00	9:15	9:30	9:45	10:00	10:15	10:30	10:45	11:00	11:15	11:30	11:45	12:00	12:15	12:30	12:45	1:00	1:15	1:30	
FUNNEL VISION	Alice in Wonderland (PG) Funnel Vision					Lilo & Stitch (PG) Funnel Vision					Toy Story (G) Funnel Vision											
BUENA VISTA THEATRE	Disney Signature: Wings of Life (G) Buena Vista Theatre										Lincoln (PG-13) Buena Vista Theatre >2:30 p.m.											
CHARACTER	Donald Gangway	Hook & Smeek Post Office	Pluto Rustmore	Jack Sparrow Pathway	Goofy Post Office	Hook & Smeek Post Office	Pluto Scuttles	Daisy Gangway	Jack Sparrow Pelican Point	Character Dance Party Gazebo 1												
FUN FOR ALL AGES	Meet in Evolution at 8:15 a.m. (Departs at 8:30 a.m.)		Island Power Walk Meet at Post Office			DJ Marius Spins on the Island Island Gazebo 1			Crab Races Gazebo 1		Basketball Free Throw In Da Shade		Crab Races Gazebo 2		Carl Mose LIVE Island Gazebo 1 - Live Guitar		Character Dance Party Gazebo 1		Family Whale Dig Monstro Point			
ADULTS	Friends of Bill W. Outlook		Secrets to a Flatter Stomach Senses Spa & Salon			Yoga on the Beach Serenity Bay			Basketball Free Throw In Da Shade		Club 18*21 - Basketball In Da Shade											
VIBE 14-17 YEARS OLD	The Wild Side Meet at Vibe		Teen Hideout Opens			Lunch At Cookies Too																
EDGE 11-14 YEARS OLD			Sand Soccer Sports Beach			In Da Shade		Lunch at Cookies Too		Pelican Plunge												
SCUTTLES COVE	Water Games			Sebastian Sea Search			Treasure Hunt		Lunch		Sand Castle Competition											
OCEANEER LAB																						
OCEANEER CLUB	Youth Activities Open House																					
Afternoon	1:45	2:00	2:15	2:30	2:45	3:00	3:15	3:30	3:45	4:00	4:15	4:30	4:45	5:00	5:15	5:30	5:45	6:00	6:15	6:30	6:45	
FUNNEL VISION	Peter Pan (G) Funnel Vision			Tinker Bell (G) Funnel Vision			Virtual Tours Funnel Vision															
BUENA VISTA THEATRE	Brave (PG) - DOLBY 3D Buena Vista Theatre			Wreck-It Ralph (PG) - 2D Version Buena Vista Theatre >7:23 p.m.																		
CHARACTER	Stitch Gangway	Peter Pan Dk 4, Balcony		Goofy Preludes	Tinker Bell Lobby Atrium	Hook & Smeek Preludes	Minnie Lobby Atrium					Jack Sparrow D Lounge										
FUN FOR ALL AGES	DJ Marius Spins on the Island Island Gazebo 1		Bingo Pre Sales		Double-Up Jackpot BINGO D Lounge		Oz The Great and Powerful (PG) - DOLBY 3D Walt Disney Theatre >7:22 p.m.															
FUN FOR ALL AGES	Carl Mose LIVE Island Gazebo 1 - Live Guitar		Youth Activities Open House Edge		Pirate Trivia District Lounge		Disney Vacation Club Group Presentation Evolution		Xbox Challenge 687 Pub		A Pirate's Life For Me D Lounge											
ADULTS	Making of the Dream Evolution		Art of The Theme Show Tour Meet at Meridian		Good Feet Seminar Senses Spa & Salon		Acupuncture Seminar Senses Spa & Salon		Dream Team Draft Day Baseball 687 Pub													
VIBE 14-17 YEARS OLD	Hangin' at Teen Hideout		Youth Activities Open House		Anyone Can Cook																	
EDGE 11-14 YEARS OLD	Hangin' at In Da Shade		Invade Teen Hideout 'til 4:00 p.m.		Tween Pool Party In Vibe		Anyone Can Cook															
SCUTTLES COVE	Caribbean Beach Party		Capture the Flag		Scuttles Cove Closes at 4:00 p.m.																	
OCEANEER LAB 3-12 YEARS OLD	POTC - Tides of Fortune		Stitch's Adventure Squad		Dinner		A Pirate's Life For Me D Lounge															
OCEANEER CLUB 3-12 YEARS OLD	Youth Activities Open House		"Magic Playfloor" 4:15 p.m. - 4:45 p.m.		Once Upon a Time		Dinner		So You Want to be a Pirate?													
Evening	7:00	7:15	7:30	7:45	8:00	8:15	8:30	8:45	9:00	9:15	9:30	9:45	10:00	10:15	10:30	10:45	11:00	11:15	11:30	11:45	12:00	
FUNNEL VISION	Mickey's Pirates Funnel Vision			Muppet Treasure Island (PG) Funnel Vision			Buccaneer Blast & Club Pirate Funnel Vision						POTC: The Curse of the Black Pearl (PG-13) Funnel Vision									
BUENA VISTA THEATRE	Wreck-It Ralph (PG) - 2D Version Buena Vista Theatre			Oz The Great and Powerful (PG) - 2D Version Buena Vista Theatre >1:07 a.m.																		
CHARACTER	Stitch Dk 4, Balcony	Jack Sparrow D Lounge		Chip/Dale Dk 4, Balcony		Goofy Preludes	Tinker Bell Lobby Atrium	Hook & Smeek Preludes	Donald Lobby Atrium													
FUN FOR ALL AGES	Pirate Games Deck Stage, Deck 11, Midship		Oz The Great and Powerful (PG) - DOLBY 3D Walt Disney Theatre - Starts at 8:00 p.m. >10:07 p.m.		A PIRATE'S LIFE FOR ME D Lounge		Buccaneer Blast Fireworks followed by Club Pirate Deck Stage, Deck 11, Midship															
FUN FOR ALL AGES	Family Crafts D Lounge		Pirate Trivia D Lounge																			
ADULTS	Carl Mose LIVE Quiet Cove - Live Guitar		TV Tune Trivia 687 Pub		NBA Basketball 687 Pub (Subject to satellite availability)		Cognac Tasting Meridian (Pre Book/Nom Fee)		Carl Mose LIVE Quiet Cove - Live Guitar		Balazs Peci LIVE District Lounge - Live Piano		Krazy Karaoke & Guest DJ Mike West Evolution									
ADULTS	Balazs Peci LIVE District Lounge - Live Piano		AndrewVictoria LIVE District Lounge - Live Music		Club 18*21 - Mixer Currents		AndrewVictoria LIVE District Lounge - Live Music															
VIBE 14-17 YEARS OLD	Smoothie Time		Pump It Up		Mix n Match		Fireworks		Gender Wars		A Pirate's Life For Me											
EDGE 11-14 YEARS OLD	Gender Wars		Magic Show		Fireworks		A Pirate's Life For Me															
OCEANEER LAB 3-12 YEARS OLD	Anyone Can Cook		Magic Playfloor		Get the Hook		POTC - Tides of Fortune															
OCEANEER CLUB 3-12 YEARS OLD	Magic Playfloor		So You Want to be a Pirate?		Memory Wall		Pluto's PJ Party		Youth Activities Open House "Magic Playfloor" 11:00 p.m. - 11:30 p.m.													

Symbol for activities that will be repeated during the cruise



FOLD

Fold along the dotted lines and take me with you so you don't miss any of the fun!

FOLD

IN THE SPOTLIGHT SERIES
- MOVE IT SERIES

JUMP UP SERIES
- CREATE & INVENT SERIES
- OPEN HOUSE

CLUBHOUSE SERIES
- STORYBOOK SERIES

TUESDAY, APRIL 30, 2013 - DISNEY'S CASTAWAY CAY

BUENA VISTA THEATRE

				
8:30 a.m. Run Time: 1 hr 17 min Rating: G	12:00 p.m. Run Time: 2 hr 30 min Rating: PG-13	3:00 p.m. & 8:15 p.m. Run Time: 1 hr 41 min Rating: PG	5:30 p.m. Run Time: 1 hr 53 min Rating: PG	11:00 p.m. Run Time: 2 hr 07 min Rating: PG

Character Appearances

DONALD DUCK Gangway 8:45 a.m. & 9:45 a.m.	MINNIE MOUSE Scuttle's Cove - 9:45 a.m. Mt. Rustmore - 10:45 a.m.	CHARACTER DANCE PARTY Island Gazebo 1 - 12:15 p.m.	PETER PAN Deck 4, Balcony - 4:45 p.m.	PIRATE MINNIE MOUSE Lobby Atrium - 5:00 p.m.	PIRATE GOOFOY Preludes 5:00 p.m. & 9:30 p.m.	PIRATE MICKEY MOUSE Deck 4, Balcony 5:15 p.m. & 9:30 p.m.	TINKER BELL Lobby Atrium 5:15 p.m. & 9:45 p.m.	PIRATE STITCH Deck 4, Balcony - 7:00 p.m.	PIRATE CHIP & DALE Deck 4, Balcony - 9:00 p.m.	PIRATE DAISY DUCK Lobby Atrium - 9:30 p.m.	PIRATE DONALD Lobby Atrium - 10:00 p.m.
JACK SPARROW Island Pathway - 9:30 a.m. Pelican Point - 10:45 a.m.	CHIP & DALE Post Office 9:30 a.m. & 10:30 a.m.	DAISY DUCK Gangway 9:30 a.m. & 10:30 a.m.	GOOFOY Mt. Rustmore - 9:45 a.m. Scuttle's Cove - 10:45 a.m.	STITCH Gangway - 9:15 a.m., 10:15 a.m. & 3:00 p.m.	MICKEY MOUSE Scuttle's Cove - 9:15 a.m. Mt. Rustmore - 10:15 a.m.	JACK SPARROW Island Pathway - 9:30 a.m. Pelican Point - 10:45 a.m.	CHIP & DALE Post Office 9:30 a.m. & 10:30 a.m.	DAISY DUCK Gangway 9:30 a.m. & 10:30 a.m.	GOOFOY Mt. Rustmore - 9:45 a.m. Scuttle's Cove - 10:45 a.m.	GOOFOY Mt. Rustmore - 9:45 a.m. Scuttle's Cove - 10:45 a.m.	GOOFOY Mt. Rustmore - 9:45 a.m. Scuttle's Cove - 10:45 a.m.

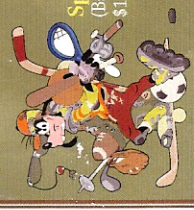
For details of daily Disney character appearances, refer to the character line on your Navigator Grid, or the digital character board in the Lobby Atrium.

YOUTH ACTIVITIES THEMED EXPERIENCES

- CLUBHOUSE SERIES** focuses on movement and features content which appeals to younger children.
- JUMP UP! SERIES** includes large group games & movement-oriented activities.
- CREATE & INVENT SERIES** will have a tactile focus allowing children to create and admire their work.
- OPENHOUSE** activities for families, adults and children of all ages to enjoy together.
- SPOTLIGHT SERIES** focuses on children's stage presence with lots of activities and enthusiasm.
- SOLVE IT! SERIES** are less active, but will challenge children with problem/solutions-based activities.

GOOFOY'S SPORTS
Digital Simulators
Golf Simulator
Sports Simulator
\$25 / half hr, \$45 / hr
\$12 / half hr, \$20 / hr

Reservations can be made at the Port Adventures Desk, Deck 3, Midship or at the Simulators, Deck 13, Aft



SHIP DIRECTORY

YOUTH ACTIVITIES	
DISNEY'S OCEANEER CLUB	5:00 P.M. - 10:45 P.M.
DISNEY'S OCEANEER LAB	4:00 P.M. - 1:00 A.M.
EDGE	4:00 P.M. - 1:00 A.M.
VIBE	5:00 P.M. - 2:00 A.M.
IT'S A SMALL WORLD NURSERY	9:00 A.M. - 12:00 A.M.
RECREATION	
AQUADUCK	9:00 A.M. - 8:30 P.M.
DONALD'S POOL	6:00 A.M. - 5:00 P.M.
SPORTS/GOLF SIMULATORS	1:00 P.M. - 6:00 P.M.
GOOFOY'S SPORTS DECK	12:00 A.M. - 6:00 P.M.
MARGE'S BARGES	9:00 A.M. - 3:30 P.M.
GOOFOY & MAX'S MINI GOLF	8:00 A.M. - 8:30 P.M.
MICKEY'S POOL	6:00 A.M. - 5:00 P.M.
MICKEY'S SLIDE	10:00 A.M. - 6:00 P.M.
MIDSHIP DETECTIVE AGENCY	8:00 A.M. - 11:00 P.M.
NEMO'S REEF	10:00 A.M. - 6:00 P.M.
QUIET COVE POOL	6:00 A.M. - 12:00 A.M.
SENSES FITNESS CENTER	6:00 A.M. - 10:00 P.M.
GENERAL INFORMATION	
ARR-CADE	24 HOURS
BUENA VISTA THEATRE	SHOWTIMES
DISNEY VACATION CLUB	5:30 P.M. - 10:00 P.M.
FUTURE CRUISE SALES DESK	8:00 A.M. - 10:00 A.M.
GUEST SERVICES	3:00 P.M. - 9:30 P.M.
HAIR BRAIDING	24 HOURS
MEDICAL HEALTH CENTER	5:30 P.M. - 10:00 P.M.
PRELUDES	9:30 A.M. - 11:00 A.M.
SENSES SPA AND SALON	5:45 P.M. - 6:30 P.M.
SHUTTERS PHOTO GALLERY	8:00 A.M. - 10:00 P.M.
WAIT DISNEY THEATRE	5:00 P.M. - 11:00 P.M.
SHOPPING	
MICKEY'S MAINSAIL	5:30 P.M. - 11:00 P.M.
SEA TREASURES	DECK 3, FWD
WHITE CAPS	DECK 3, FWD
VISTA GALLERY	DECK 4, MID
WHOZITS & WHAZITS	DECK 11, MID
QUACKS	DECK 11, MID

DUE TO PORT REGULATIONS, WHEN THE SHIP IS DOCKED, THE STORES MUST REMAIN CLOSED.

DINNER MENUS
Animator's Palate: Pirate's Menu
Enchanted Garden: Pirate's Menu
Royal Palace: Pirate's Menu

DRINK OF THE DAY
Bahama Mama (Alcoholic)
Coco Rahi (Non-Alcoholic)

WEATHER FORECAST
Tuesday: Cloudy High: 75°F/24°C
Wednesday: Cloudy High: 72°F/22°C

Evening Attire: Pirate or Cruise Casual

Dining Times: 5:45 p.m. & 8:15 p.m.

DINING & LOUNGES

BREAKFAST	
CABANAS CONTINENTAL (Port Side)	7:00 A.M. - 7:30 A.M.
CABANAS	7:30 A.M. - 10:45 A.M.
ENCHANTED GARDEN	8:00 A.M. - 10:30 A.M.
ROYAL PALACE	8:00 A.M. - 9:30 A.M.
LUNCH	
CABANAS	12:00 P.M. - 1:30 P.M.
COOKIES BBQ	11:30 A.M. - 2:00 P.M.
COOKIES BBQ TOO	11:30 A.M. - 2:00 P.M.
FILMORE'S FAVORITES	10:30 A.M. - 6:00 P.M.
LUIGI'S PIZZA	10:30 A.M. - 6:00 P.M.
TOW MASTER'S GRILL	10:30 A.M. - 6:00 P.M.
DINNER	
ANIMATOR'S PALATE	5:45 P.M. & 8:15 P.M.
ENCHANTED GARDEN	5:45 P.M. & 8:15 P.M.
ROYAL PALACE	5:45 P.M. & 8:15 P.M.
CABANA ALA CARTE	6:30 P.M. - 8:30 P.M.
PALO & REMY (18+)	6:00 P.M. - 9:00 P.M.
(RESERVATION REQUIRED & COVER CHARGE APPLICABLE. DIAL #7-9734)	
TOW MASTER'S GRILL	6:00 P.M. - 11:00 P.M.
LATE NIGHT (NACHOS)	
CABANAS - PIRATE'S BUFFET	10:45 P.M. - 11:30 P.M.
LUIGI'S PIZZERIA	9:30 P.M. - 12:30 A.M.
ADDED FEATURES	
BEVERAGE STATION	24 HOURS
EYE SCREAM	10:30 A.M. - 12:30 A.M.
ROOM SERVICE	24 HOURS
ENTERTAINMENT - LOUNGES BAR	
Adults must be 21 and older to consume alcoholic beverages.	
687 PUB	DECK 4, AFT 5:00 P.M. - 9:00 P.M.
687 PUB (18+)	DECK 4, AFT 9:00 P.M. - 11:30 P.M.
BON VOYAGE	DECK 3, MID 3:30 P.M. - 11:00 P.M.
COVE BAR (18+)	DECK 11, FWD 11:00 A.M. - 11:00 P.M.
COVE CAFE (18+)	DECK 11, FWD 7:00 A.M. - 12:00 A.M.
CURRENTS	DECK 13, FWD 2:00 P.M. - 12:00 A.M.
D LOUNGE	DECK 4, MID SHOWTIMES
DISTRICT LOUNGE	DECK 4, AFT 4:30 P.M. - 9:00 P.M.
DISTRICT LOUNGE (18+)	DECK 4, AFT 9:00 P.M. - 12:00 A.M.
EVOLUTION (18+)	DECK 4, AFT 10:00 P.M. - 2:00 A.M.
FROZONE TREATS	DECK 11, MID 11:00 A.M. - 11:00 P.M.
MERIDIAN (18+)	DECK 12, AFT 5:00 P.M. - 12:00 A.M.
OUTLOOK	DECK 14, MID SUNSET TIMES
PINK (18+)	DECK 4, AFT 5:00 P.M. - 12:00 A.M.
SKYLINE (18+)	DECK 4, AFT 5:00 P.M. - 12:30 A.M.
VISTA CAFE	DECK 4, MID 7:30 A.M. - 11:00 P.M.
WAVES	DECK 12, AFT 3:00 P.M. - 9:00 P.M.
CASTAWAY CAY BARS	
CONCHED OUT BAR	CASTAWAY CAY 9:30 A.M. - 4:00 P.M.
CASTAWAY AIR BAR	CASTAWAY CAY 9:30 A.M. - 3:30 P.M.
HEADS UP BAR	CASTAWAY CAY 10:00 A.M. - 3:30 P.M.
SAND BAR	CASTAWAY CAY 10:30 A.M. - 3:30 P.M.

Consumers who order raw or partially cooked, ready-to-eat food of animal origin, are hereby informed that the food is not sufficiently cooked to ensure its safety.

IMPORTANT NUMBERS

Fire/Security: 7-3001
Medical EMERGENCY: 7-3000
Health Center: 7-1923

All Ashore: Approx. 8:30 a.m.
All Aboard: 5:00 p.m.